

# MODEL 8600/02-TB3

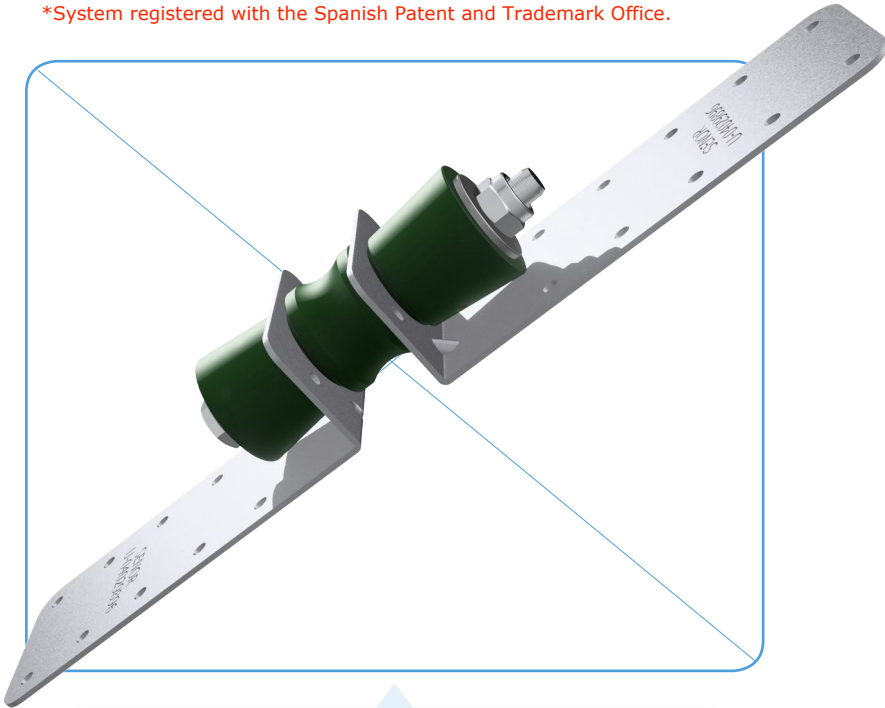
## SPECIAL RUBBER ANTI-VIBRATION MOUNT FOR PARTITION WALLS WITH DOUBLE STRUCTURE

The **8600-02/TB3** Model is specially designed for the installation of high partition walls, formed by a double structure of galvanized sheet metal profiles (uprights and U channels) that are that are screwed to different types and thickness of plasterboard.

### It is composed of:

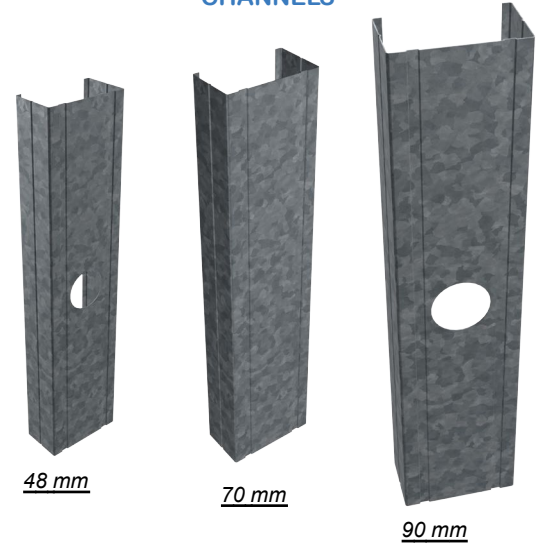
- **Triple** rubber core mount. It incorporates an innovative system that allows the extension brackets to work freely during deformation in both directions. This improves dynamic behaviour, since the polymers always work in compression regardless of the force applied.
- **Two** metal extension brackets, each with ten holes that allow the mount to be fixed to the channel at different distances, depending on the thickness of the chamber.
- **SAFETY DEVICE** consisting of a central metal shaft and two circular supports or washers. In case of fire, the triple rubber core disappears but the safety device remains, allowing the mechanical fixing to be maintained, preventing the partition wall from collapsing.

\*System registered with the Spanish Patent and Trademark Office.



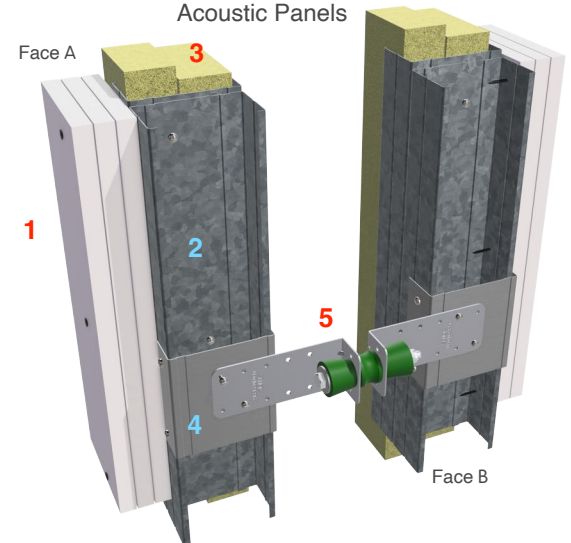
REF.	MODEL	THICKNESS (mm)	PROFILES	PACKING
SE-8600/TB3	8600	1,5	CHANNEL	50 PCS
SE-8602/TB3	8602	0,8	CHANNEL	50 PCS

### CHANNELS



### APPLICATION

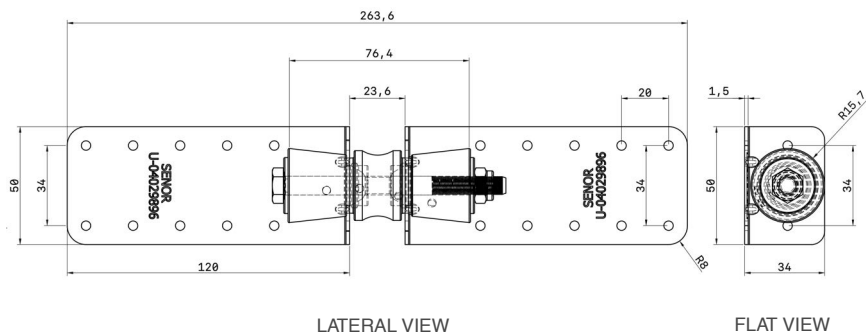
Acoustic Panels



1. 3x Gypsum plasterboard 15 mm.
2. 2x 70 U channel.
3. 2x 40 Kg/m<sup>3</sup> sound-absorbing panel. 40 mm thick.
4. 1x piece of U channel-70 for fastening with the upright channel-70.
5. 1x Anti-vibration triple rubber core mount SE-8600/TB3

### DIMENSIONS Mod. 8600/TB3

(Measurements in millimeters)



### THICKNESS OF SHEET METAL

(Measurements in millimeters)

SE-8600/TB3



**2x Metal bracket** 1,5x50x120; Made of galvanized steel in accordance to EN 10204/ DIN 50049/ ISO404. Transformation in accordance to steel standard EN 10346:2009. Steel quality DX51. D+Z275 MA. Zinc coating 300 gr/m2.

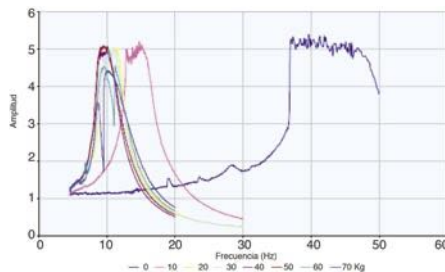
### DYNAMIC PERFORMANCE

#### CHART

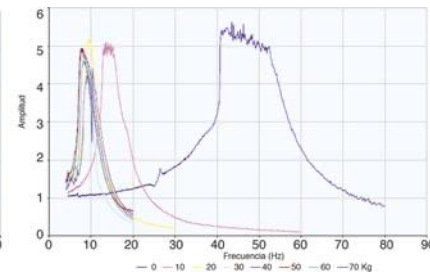
LOAD (Kg)	SWEEP (Hz)	RESONANCE FREQUENCY (Hz)	AMPLIFICATION IN RESONANCE	INSULATION THRESHOLD (Hz)
0	4,5-80	43,53	5,63	73,46
10	4,5-60	13,47	5,11	23,92
20	4,5-30	9,53	5,19	16,00
30	4,5-20	7,96	4,82	13,47
40	4-20	7,94	4,94	15,83
50	4-20	7,62	4,93	15,33
60	4-20	8,15	4,63	15,16
70	4-20	10,31	4,39	16,44

This weight of the tooling is not included, approximately equal to 1.5 kg

#### SE-8600/02-TB3 (COMPRESSION)

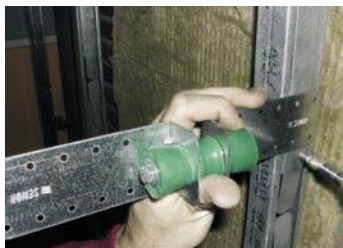


#### SE-8600/02-TB3 (TRACTION)



### APPLICATION

#### Step by Step



1



2



3



4

# MODEL 8600/02-TB3

SENOR Partition products

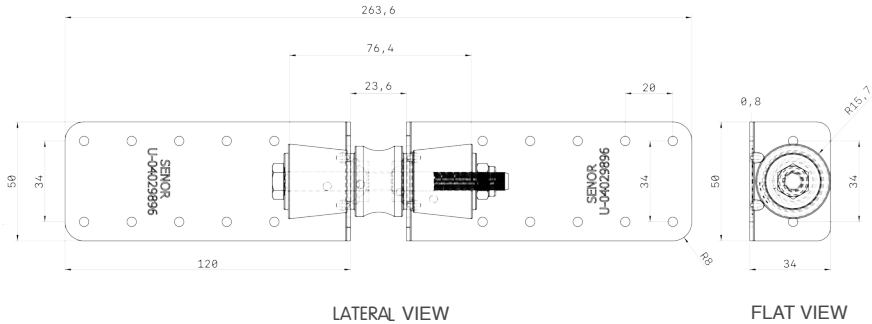
 **Youtube**  
SENOR Aisladores Acústicos



## DIMENSIONS

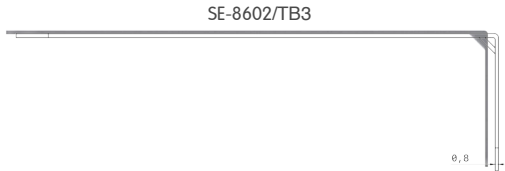
### Mod. 8602/TB3

(Measurements in millimeters)



## THICKNESS OF SHEET METAL

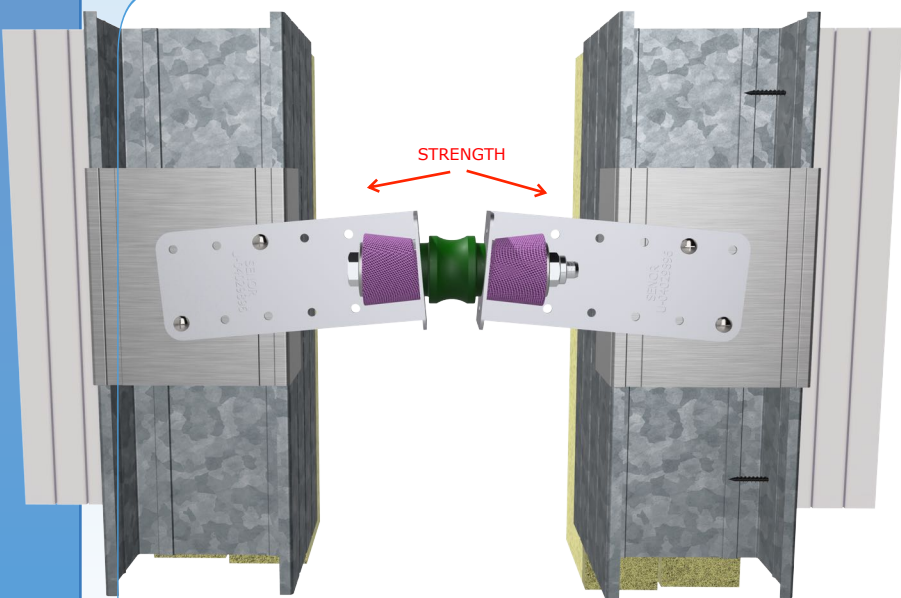
(Measurements in millimeters)



**2x Metal bracket** 0,8x50x120; Made of galvanized steel in accordance to EN 10204/ DIN 50049/ ISO404. Transformation in accordance to steel standard EN 10346:2009. Steel quality DX51. D+Z275 MA. Zinc coating 300 gr/m<sup>2</sup>.

## COMPRESSION MODES

indoor/outdoor



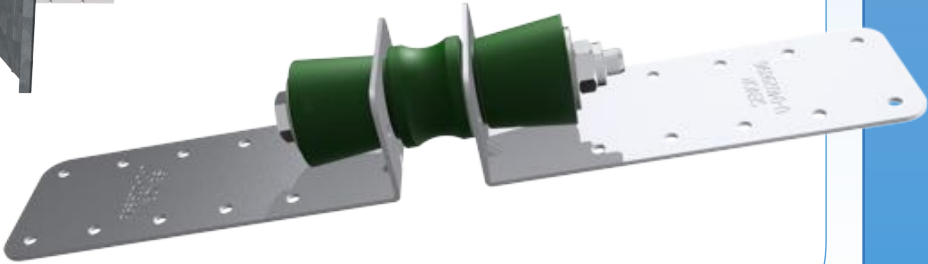
### POSITIONS:

This model is designed to work in both directions, both **axial** compression towards the **outside** of the septum and **axial** compression towards the **inside** of the septum.

### AXIAL COMPRESSION - OUTWARD:

Loads from 5kg to 70kg; maximum load 70 kg.

**Resonant frequency:** 7-15 Hz



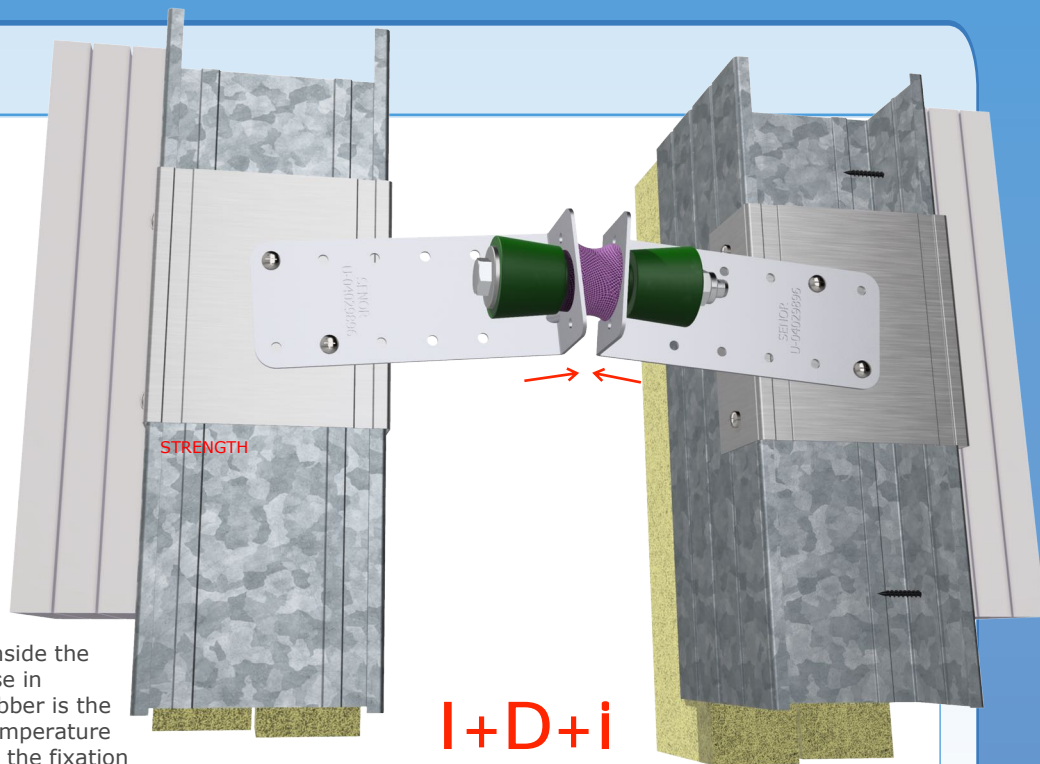
### AXIAL COMPRESSION - INWARD:

Loads from 5kg to 30kg, maximum load 30 kg.

**Resonant frequency:** 7-15 Hz

### SAFETY:

Incorporates a **central steel fire-safe shaft** inside the rubber. In the event of an exponential increase in temperature over the acoustic system, the rubber is the weakest component of the structure. If the temperature exceeds **120°** it disintegrates completely, but the fixation remains thanks to its central steel bar (**MAXIMUM SAFETY**).



I+D+i

\*System registered with the Spanish Patent and Trademark Office.

### STEEL SHAFT:

1x Steel bolt 8x95; Zinc Plated Cr+3 Standard DIN603

1x Standard nuts DIN-934 A2; Manufactured in zinc plated steel for metric 8

2x Wide flange washers DIN-9021; Made of zinc plated steel for metric 8.

**Standard:** UNE-EN 37-507-88

**Use:** Hot-dip galvanized coatings for screws and other fasteners.

EJE DE ACERO

