

# CONSTRUCTION Catalogue

## 2021

**DOUBLE RUBBER** WALL MOUNT WITH  
**DIRECT** FIXATION TO **CERAMIC** WALL

Ref. SE-3900/LD

Ref.  
**3900/LD**

**N° PT**  
4029896 (0)

# SENOR

# CONSTRUCTION Catalogue 2021

## DOUBLE RUBBER WALL MOUNT WITH DIRECT FIXATION TO CERAMIC WALL

Ref. SE-3900/LD

Manufacturer of **ANTIVIBRATION** systems



Ref.  
3900/LD

### Introduction

A **DIFFERENT** and **PROFESSIONAL** wall mount.

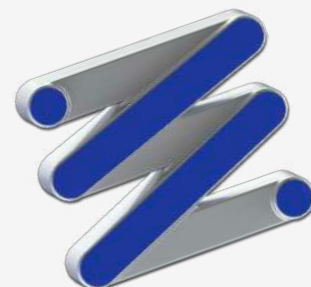
Higher performance in the least space. It is a **DOUBLE RUBBER** wall mount with rubbers placed face to face and a steel shaft inside. Our engineers work every day for your security.

**3900/LD** is manufactured with renovated and high performance raw materials providing improvements in the **vibro-mechanical** field.

**Nº PT**  
4029896 (0)



\*SENOR Aisladores Acústicos



**SENOR**



# CONSTRUCTION Catalogue 2021

## DOUBLE RUBBER WALL MOUNT WITH DIRECT FIXATION TO CERAMIC WALL

Ref. SE-3900/LD

Ref.  
3900/LD

### ACOUSTIC / PERFORATED BRICK Wall lining

**FORKED BRACKET:** it is manufactured from high performance galvanised steel **Dx54d + Z140** with a **2 mm** thickness.

**RENOVATED POLYMERS:** they have a better damping factor and a high degree of isolation in the **medium/high frequencies** (Hz).

(KRAIBURG-TPE).  
Tested according to  
UNE-EN ISO 10846-1:2009.

#### FORKED BRACKET:

It is available in several lengths: 120 mm up to 250 mm.  
Check availability.

### SAFETY DEVICE

It is composed of a central shaft and a circular metallic support. In case of fire, the polymer disappears but the mechanical fixation remains. \*System registered in the Spanish Patent and Trademark Office\*.



# CONSTRUCTION Catalogue 2021

## DOUBLE RUBBER WALL MOUNT WITH DIRECT FIXATION TO CERAMIC WALL

Ref. SE-3900/LD

GREEN DOUBLE RUBBER:

Available references

1° SE-3900/LD-120.

2° SE-3900/LD-250.

Check availability.

Recommended for loads between  
**5 kg** and **60 kg** (maximum load).

(Strongly recommended not to  
exceed this limit in order to prevent  
overstressing the polymer).

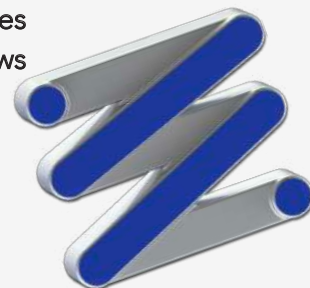
**RESONANCE** Frequency: **7-15 Hz**.

## LABORATORY TESTS. UNE-EN ISO 10846-1:2009

Acoustic and vibrations. Laboratory measurement of vibro-acoustic transfer properties of elastic elements.

### Introduction

When an acoustic treatment is stimulated and starts vibrating, it generates a swinging movement. Therefore, we have to use a wall mount that allows axial compression in both directions.



Manufacturer of **ANTIVIBRATION** systems



\*SENOR Aisladores Acústicos



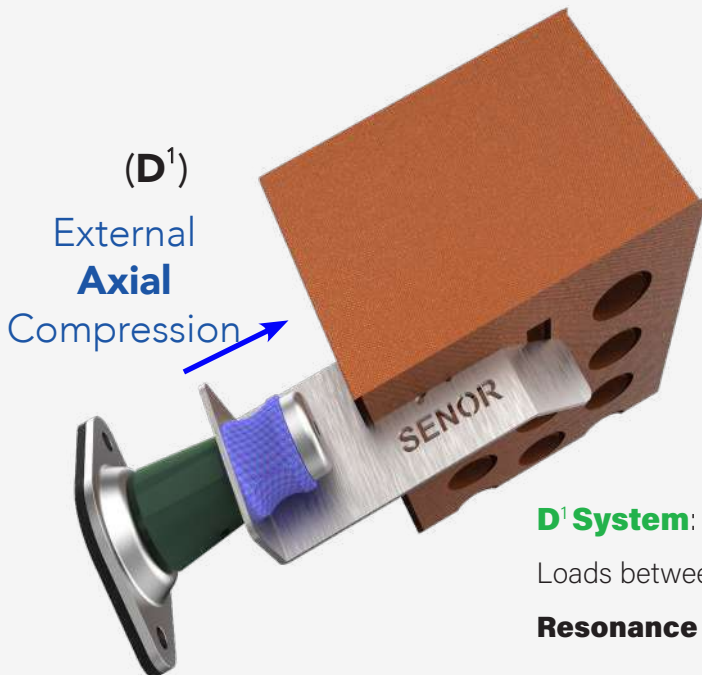
# CONSTRUCTION Catalogue 2021

## DOUBLE RUBBER WALL MOUNT WITH DIRECT FIXATION TO CERAMIC WALL

Ref. SE-3900/LD

The **3900/LD** model incorporates a **PATENTED** movement control system that allows the metallic bracket to be moved on both sides. In this way, when the wall mount is fixed to the wall by using screws it remains joined to the wall and makes the steel bracket free to do polymer compression in both directions.

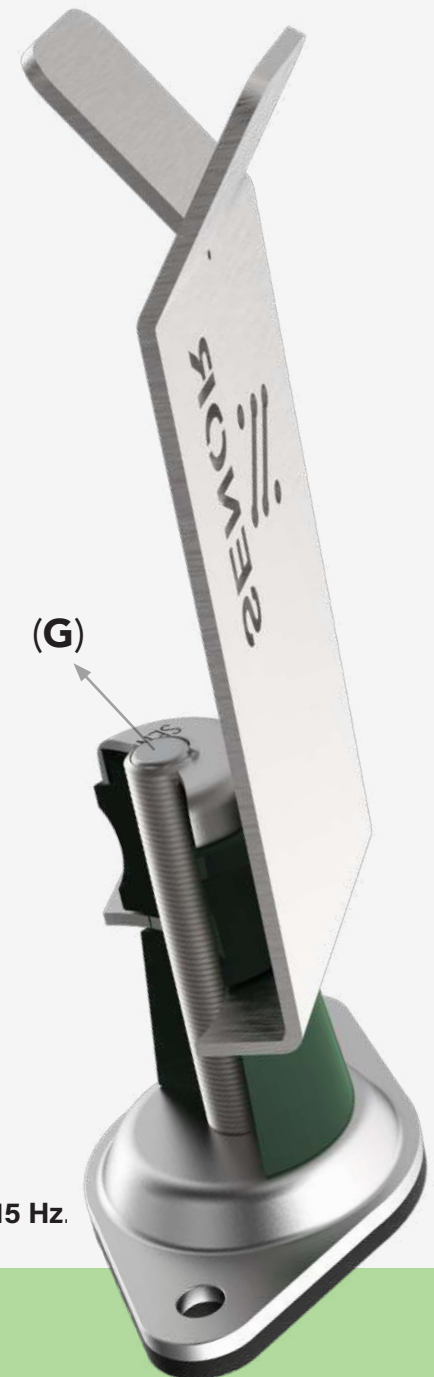
The steel shaft (**G**) allows for limiting the movement and facilitating the axial movement.



**D<sup>1</sup> System:** TC-4/GPN

Loads between **5-25 kg**.

**Resonance** Frequency: **7 up to 15 Hz**.

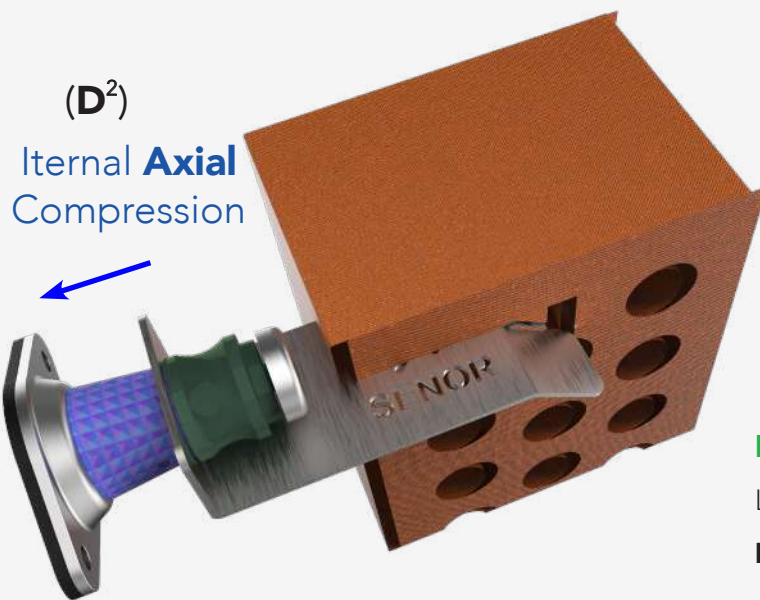


# CONSTRUCTION Catalogue 2021

## DOUBLE RUBBER WALL MOUNT WITH DIRECT FIXATION TO CERAMIC WALL

Ref. SE-3900/LD

Manufacturer of **ANTIVIBRATION** systems



Ref.  
3900/LD

**N° PT**  
4029896 (0)

**D<sup>2</sup> System:** TC-4/GPN

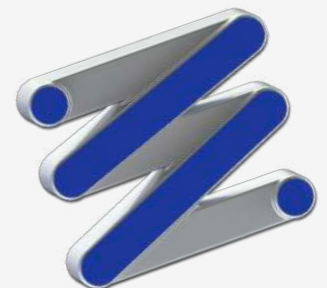
Load between **8-60 kg.**

**Resonance** Frequency: **7 up to 15 Hz.**

All these strengths cause tensions in the polymers, both traction and compression. In the engineering field, we can differentiate between (**axial**) compressive strength and compressive stress.



\*SEÑOR Aisladores Acústicos



**SEÑOR**



# CONSTRUCTION Catalogue 2021

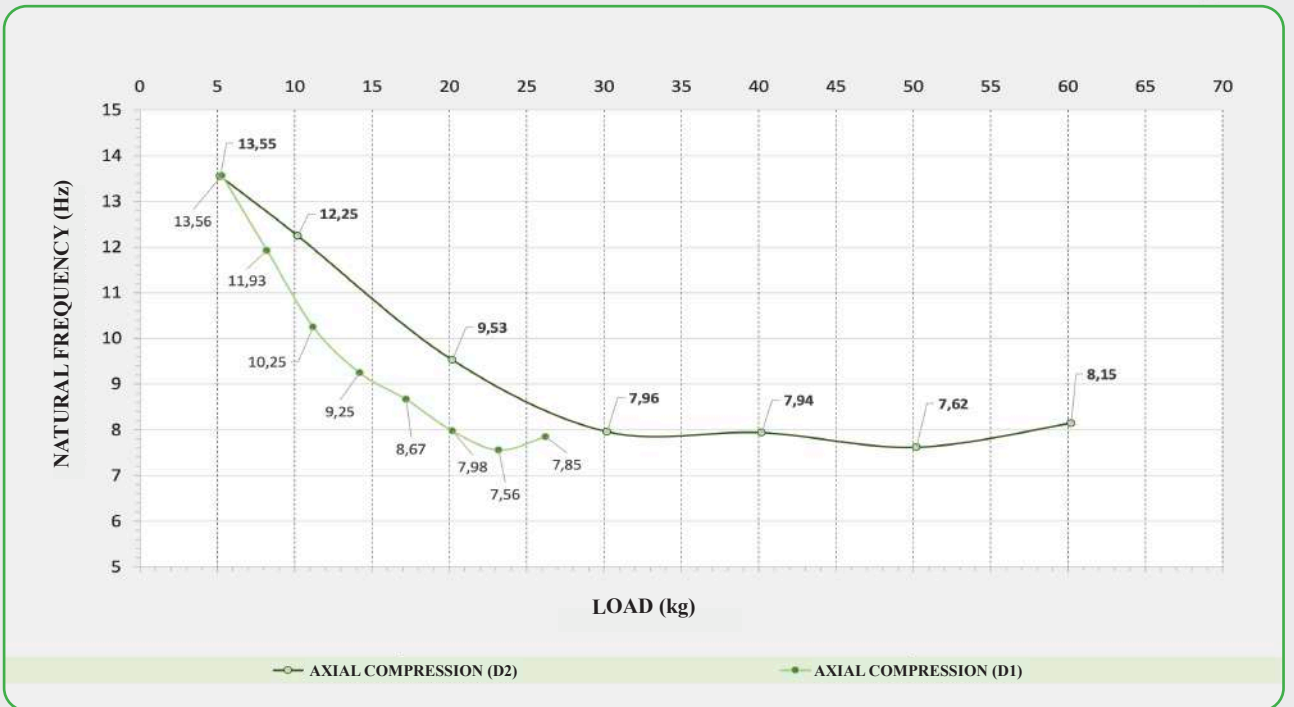
## DOUBLE RUBBER WALL MOUNT WITH DIRECT FIXATION TO CERAMIC WALL

Ref.  
3900/LD

Ref. SE-3900/LD



Chart 1



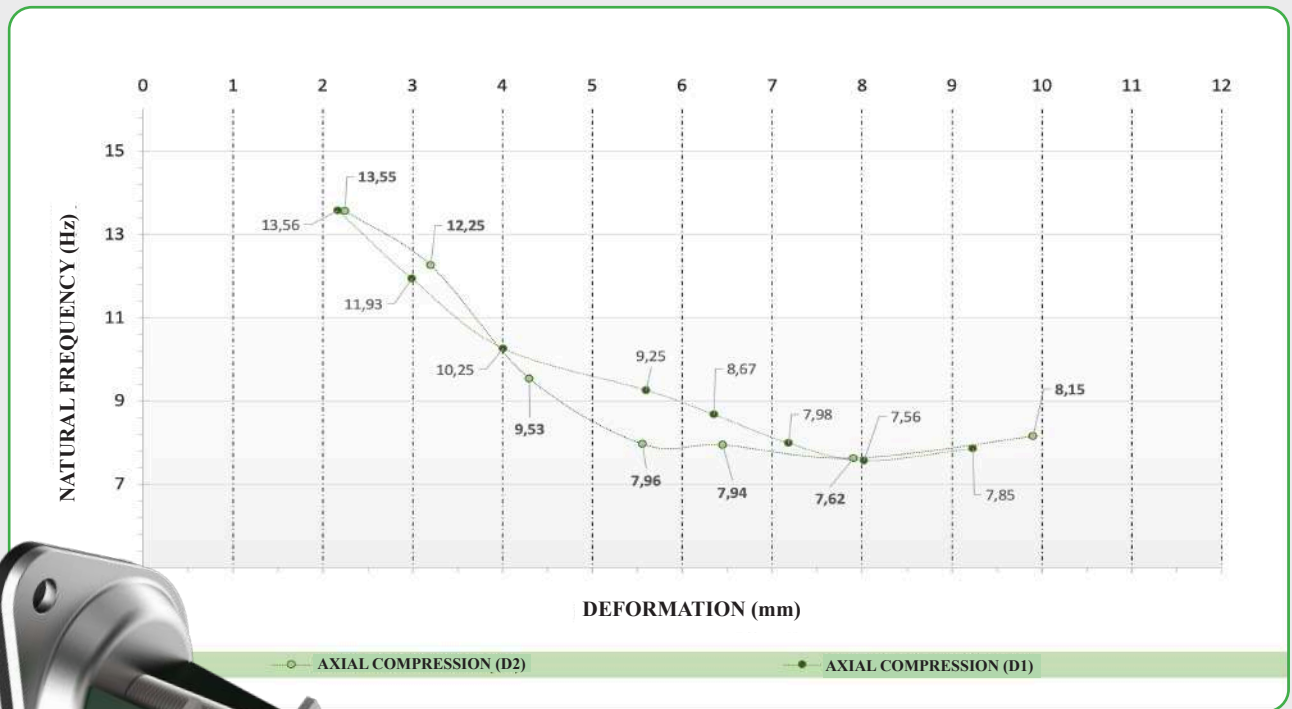
# CONSTRUCTION Catalogue 2021

## DOUBLE RUBBER WALL MOUNT WITH DIRECT FIXATION TO CERAMIC WALL

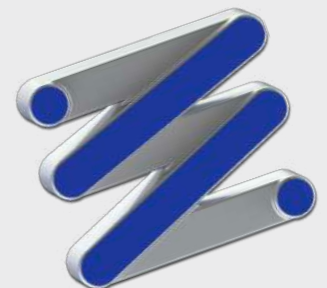
Ref. SE-3900/LD

Manufacturer of **ANTIVIBRATION** systems

Chart 2



Ref.  
3900/LD



\*SEÑOR Aisladores Acústicos





# CONSTRUCTION Catalogue 2021

**DOUBLE RUBBER WALL MOUNT WITH  
DIRECT FIXATION TO CERAMIC WALL**

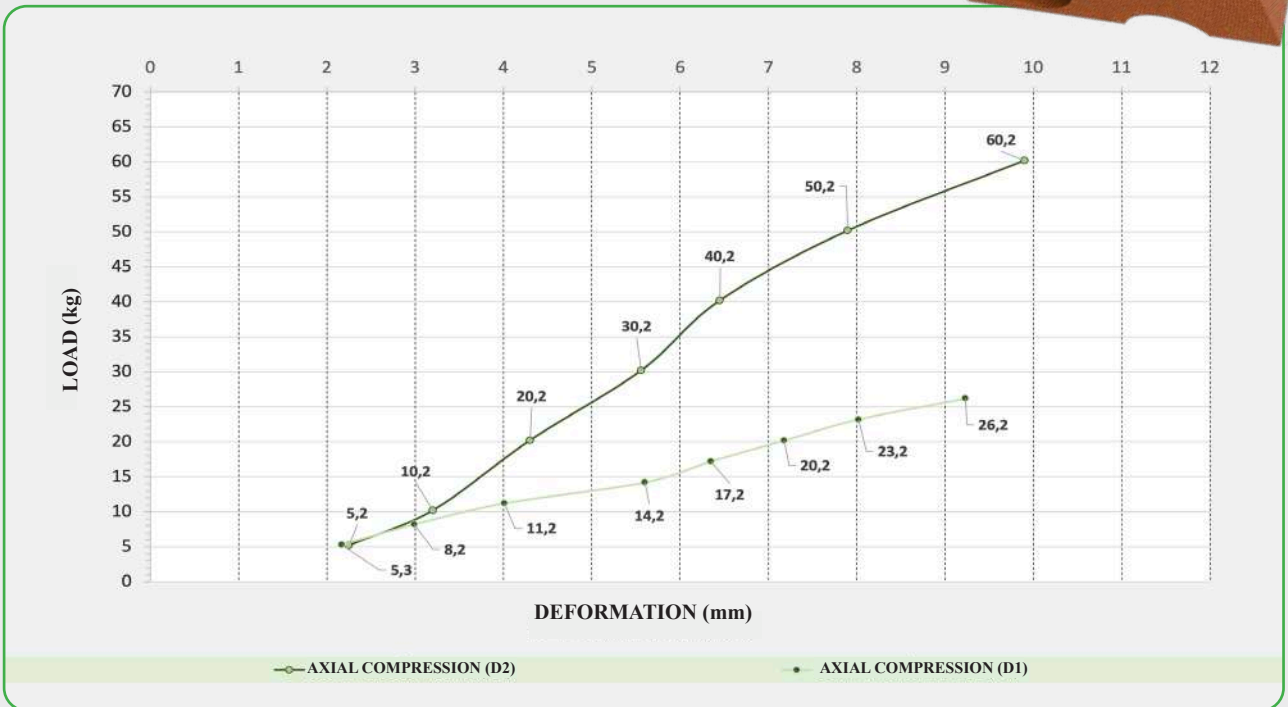
Ref. SE-3900/LD

Ref.  
3900/LD



**N° PT**  
4029896 (0)

Chart 3



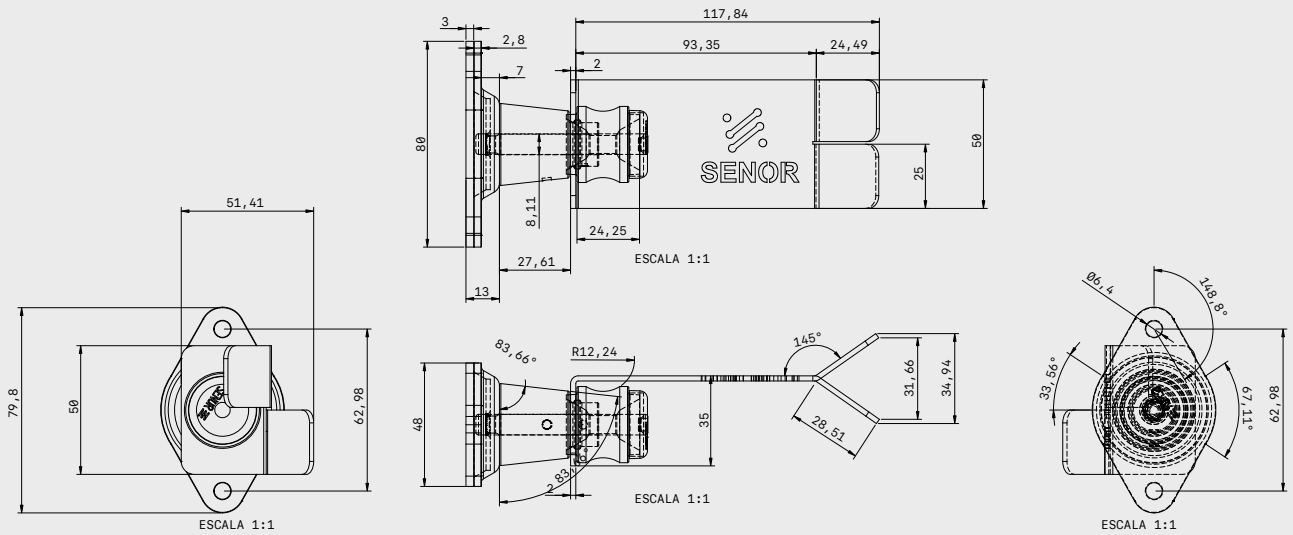
# CONSTRUCTION Catalogue

## 2021

### DOUBLE RUBBER WALL MOUNT WITH DIRECT FIXATION TO CERAMIC WALL

Ref. SE-3900/LD

Manufacturer of **ANTIVIBRATION** systems



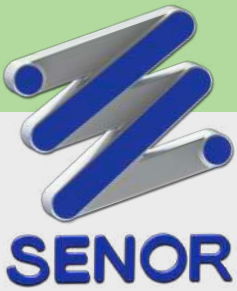
## DRAWING VIEWS

Ref.  
**3900/LD**

TÍTULO <b>3900-LD TABIQUE GERO</b>		
ÚLTIMA ACTUALIZACIÓN <b>04/13/21</b>	UNIDADES <b>mm</b>	HOJA <b>1 / 1</b>
PROYECCIÓN EN DIÉDRICO EUROPEO	ESCALAR <b>1:3</b>	TAMAÑO <b>A2</b>



\*SENOR Aisladores Acústicos



# CONSTRUCTION Catalogue 2021

## DOUBLE RUBBER WALL MOUNT WITH DIRECT FIXATION TO CERAMIC WALL

Ref. SE-3900/LD

### Certificate of COMPLIANCE



SENR certifies:

The **3900/LD model** in the construction range for the acoustic connexion between **PERFORATED BRICK** walls has an optimal lifespan of **10 years** provided that the installation is carried out under ordinary **environmental conditions** and are not exposed to chemical components that could degrade the product. The **3900/LD model** strictly complies with **UNE** (Spanish Association for Standardization) **UNE 100-153-88**: air conditioning: vibration insulators: design criteria.

SENR declares under its responsibility that the following components for suspended ceiling in buildings strictly complies with the technical sections of installation mentioned in the technical documentation of the product.

**Certificación**  
Concedida a  
**SUSPENSIONES ELASTICAS DEL NORTE SL**

PLG. IND. EL GARROTAL, PARCELA 10 MODULO 5 - 14700 - PALMA DEL RIO - CORDOBA. - ESPAÑA

Bureau Veritas Certification certifica que el Sistema de Gestión ha sido auditado y encontrado conforme con los requisitos de la norma:

**NORMA**  
**ISO 9001:2015**

El Sistema de Gestión se aplica a:

**DISEÑO, DESARROLLO Y FABRICACIÓN DE AISLADORES ACÚSTICOS PARA LA ERRADICACIÓN DE LAS VIBRACIONES Y LA CONTAMINACIÓN POR RUIDO PARA SU APLICACIÓN EN LOS SECTORES DE LA CONSTRUCCIÓN Y LA INDUSTRIA.**

Número del Certificado:	ES114742- 1
Aprobación original:	25-09-2002
Auditoría de certificación/renovación:	14-09-2020
Caducidad de ciclo anterior:	03-10-2020
Certificado en vigor:	04-10-2020
Caducidad del certificado:	03-10-2023

*Este certificado está sujeto a los términos y condiciones generales y particulares de los servicios de certificación*

Bureau Veritas Iberia S.L.  
C/ Valportillo Primera 22-24, Edificio Caoba, 28108 Alcobendas - Madrid, España

# CONSTRUCTION Catalogue

## 2021

### DOUBLE RUBBER WALL MOUNT WITH DIRECT FIXATION TO CERAMIC WALL

Ref. SE-3900/LD

Manufacturer of **ANTIVIBRATION** systems

#### Warning

Relevant information:

**SENOR** reserves the right to make changes in specifications at any time without prior notice. It is a responsibility of the user to use the latest and updated version of the product data sheets. **A copy of which will be available on request.** This information and, in particular, relative recommendations for the application and final use of the product, are given in good faith, based on **SENOR** knowledge and experience of its products, provided that they are correctly installed in ordinary circumstances and within its useful life.



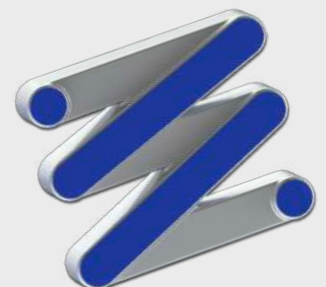
Ref.  
**3900/LD**

**N° PT**

**4029896 (0)**



\*SENOR Aisladores Acústicos



**SENOR**