

# Ref. 4725 V/MDS

## ACOUSTIC **HYBRID** HANGER WITH DIRECT FASTENING TO CEILING CHANNELS **TC47**, **F530** or **MAESTRA 4717**

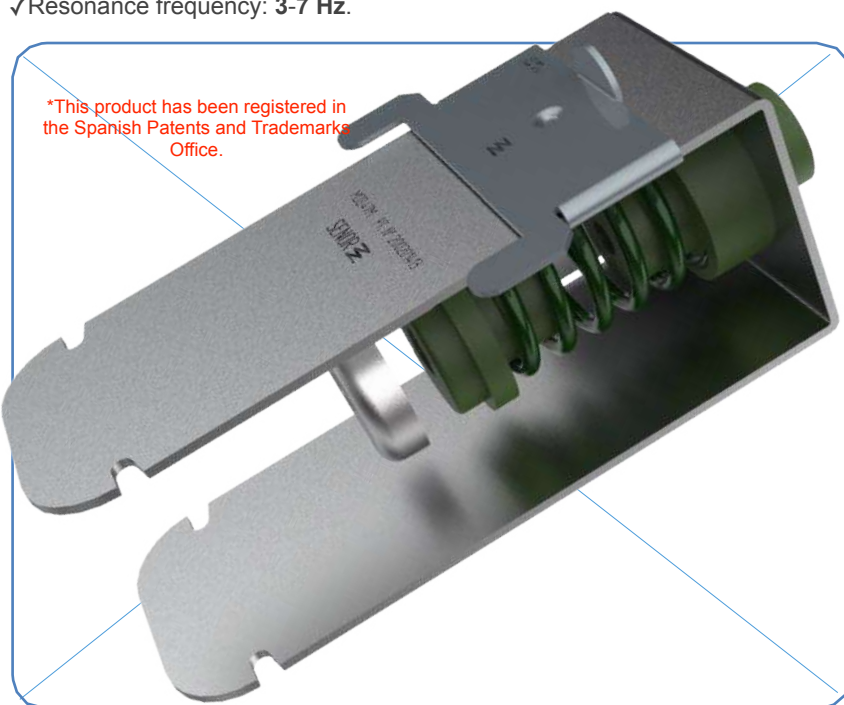
This model is a hybrid acoustic hanger made with the latest technology and with high quality raw materials.

The **HYBRID** system is the combination of a polymer (rubber) and a steel spring:

- The helicoidal spring: it is made of steel according to Standard **DIN 2095-UNE EN 10270**, with antioxidant finish and covered with metallic green **EPOXI**.
- The polymer: this is a high quality polymer known as **KRAIBURG-TPE** which is tested according to the Standard **UNE-EN ISO 10846-1:2009**.

This combination provides quality and performance to any given acoustic system and eradicate sound frequencies and vibrations. This hanger get fastened into the channel easily and quickly thanks to our exclusive design. **We are the only ones who can manufacture it.**

✓Resonance frequency: **3-7 Hz**.



REF	COLOUR	METRIC MIN-MAX	CHANNEL (mm)	LOAD (kg) MIN-MAX	PACKING
SE-4725 V/MDS/50		6 - 8	45 / 48	15 - 30	50

# SENOR

## USES

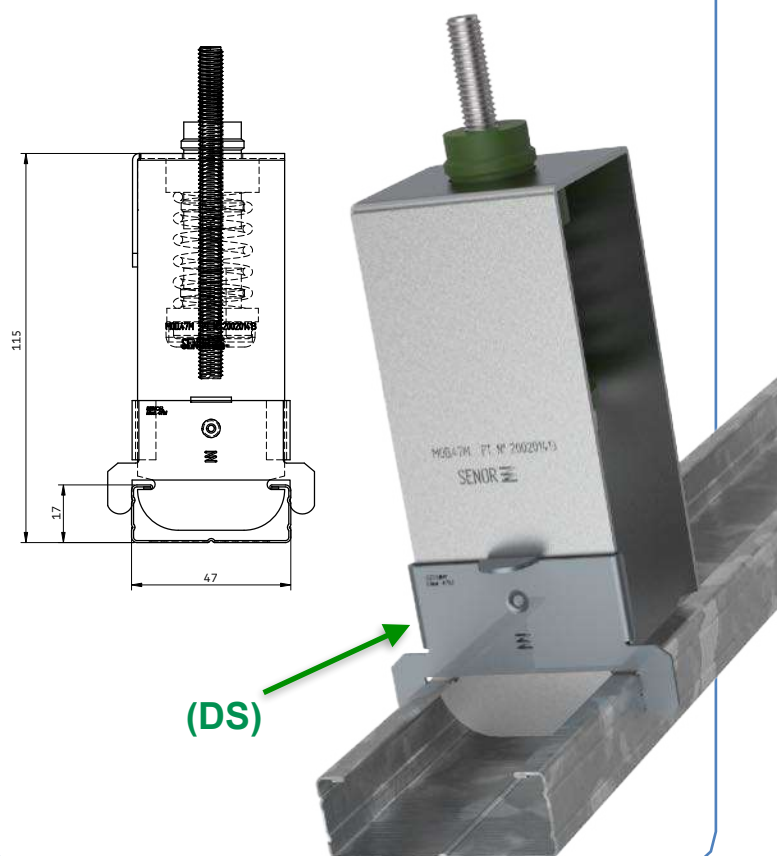
Installation of acoustic ceilings

30



## METAL CHANNEL

Galvanized steel ceiling channel **45/48** millimeters





SEÑOR Aisladores Acústicos

# Ref. 4725 V/MDS

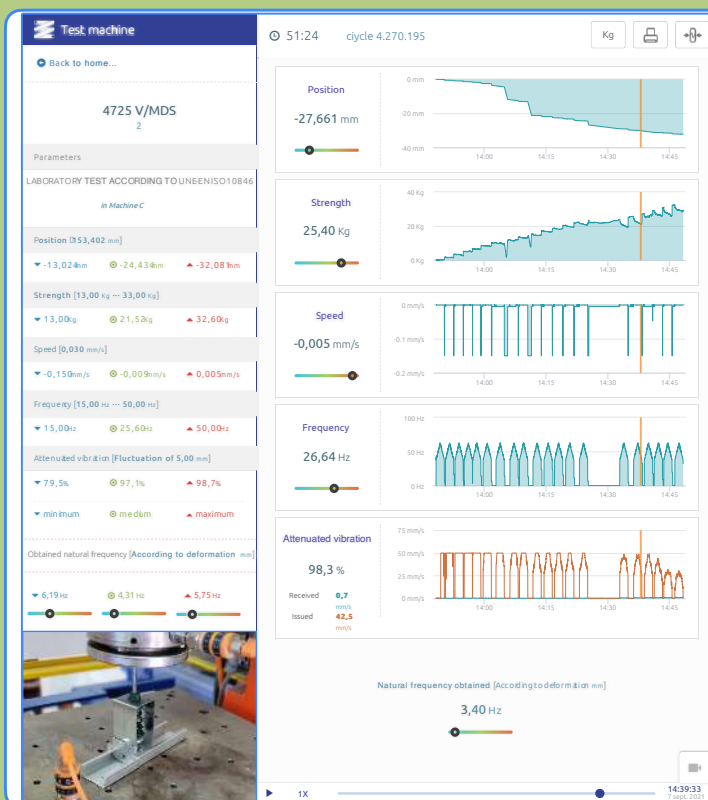
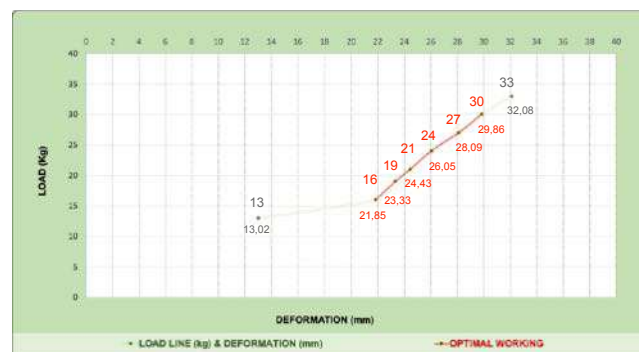
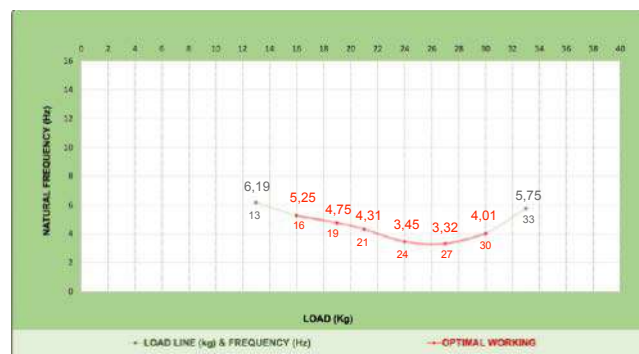


Chart 1



Laboratory test  
UNE-EN ISO 10846-1:2009

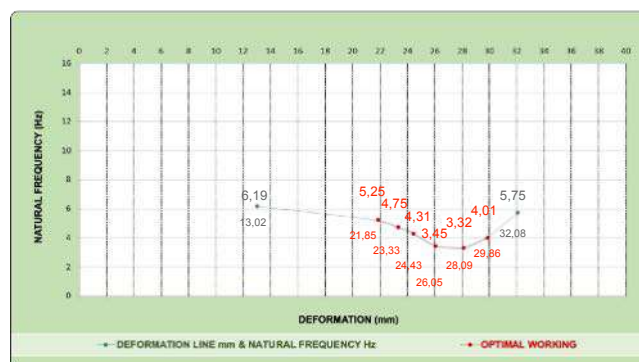
Chart 2



LOAD (Kg)	DEFORMATION (mm)	RESONANCE FREQUENCY (Hz)	SWEEP (Hz)		SOUNDPROOFING LEVEL (%)	
16	21,85	5,25	25	50	95,39	98,89
19	23,33	4,75	25	50	96,25	99,09
21	24,43	4,31	25	50	96,94	99,25
24	26,05	3,45	25	50	98,06	99,52
27	28,09	3,32	25	50	98,20	99,56
30	29,86	4,01	25	50	97,36	99,35

Chart 3

Laboratory test  
UNE-EN ISO 10846-1:2009

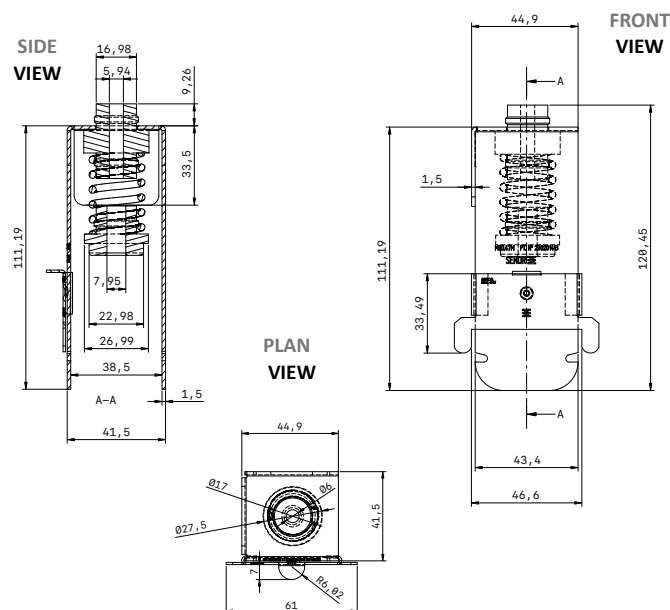
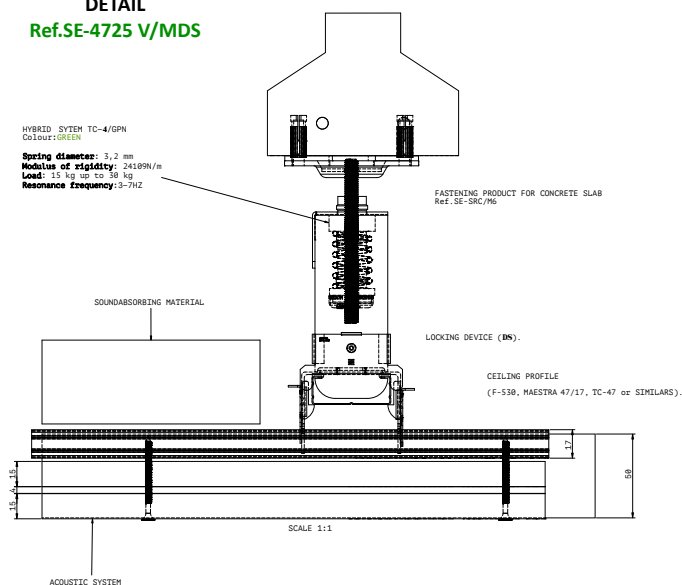




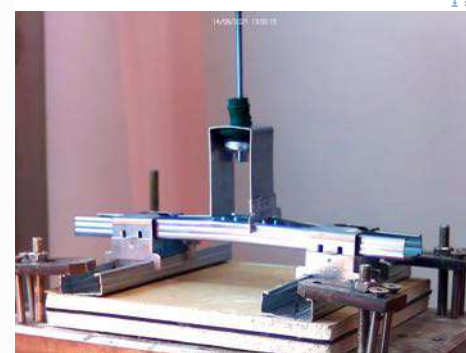
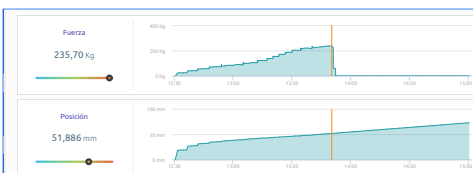
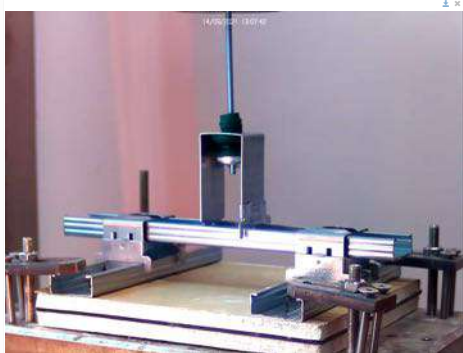
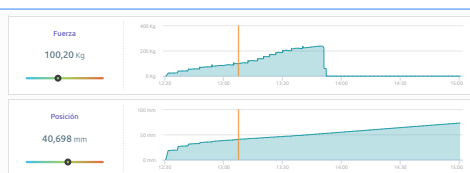
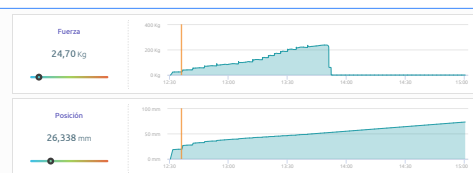
\*SENOR Aisladores Acústicos

## Ref. 4725 V/MDS

### DETAIL Ref.SE-4725 V/MDS



### BREAK STRENGTH TESTING



Applied load: 24,70 Kg

Applied load: 100,20 Kg

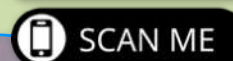
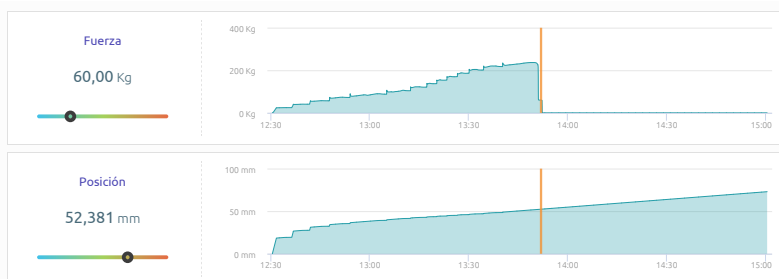
Applied load: 235,70 Kg





SEÑOR Aisladores Acústicos

# Ref. 4725 V/MDS



**Test date:**  
SEÑOR 14 September 2021

## Failure mode

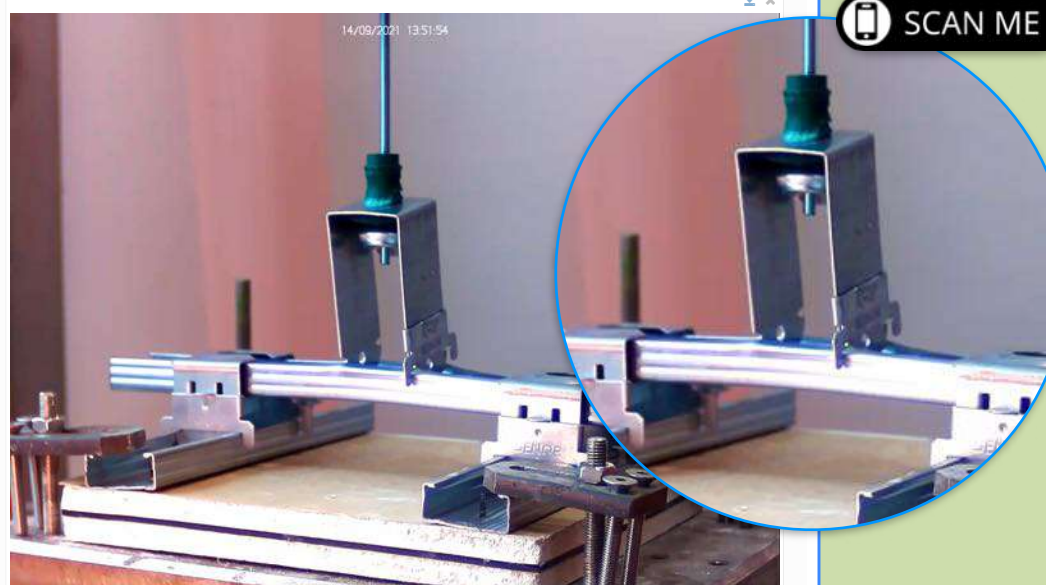
This acoustic hanger exceeds the elastic limit of ceiling channel by reaching **235,7 kg**. In this case, the strength line goes down and reaches **60,00 kg**.

The burst test is concluded.

## Conclusion

This acoustic hanger is devised to bear loads between **15 kg** up to **30 kg** (maximum load).

It strictly complies with Standard **UNE-EN 13964:2016/A1**.  
Suspended ceiling. Requirements and test methods.  
UNE: Spanish Association for Standardization.



## INSTALLATION

Ref.SE-4725 V/MDS

**STEP 1**

**STEP 2**

**STEP 3**

**STEP 4**